

**Why in heaven's name am
I doing what I am doing?**



Because

**Queen of
England
was
already
taken!**



**I wondered about
being**

**Wonder
Woman**

**Cause I can do all
things.. Right?**



Therefore, I thought

And thought ???

**What could I become that I
would be a 'Wonder' and
be admired and loved ???**

A Nurse



**And I will be a
Nurse
in Long Term Care
Everybody loves
and admires
Long Term Care Nurses**



A taste of reality...



But you know what?

**I am
still
here**

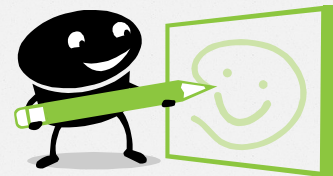


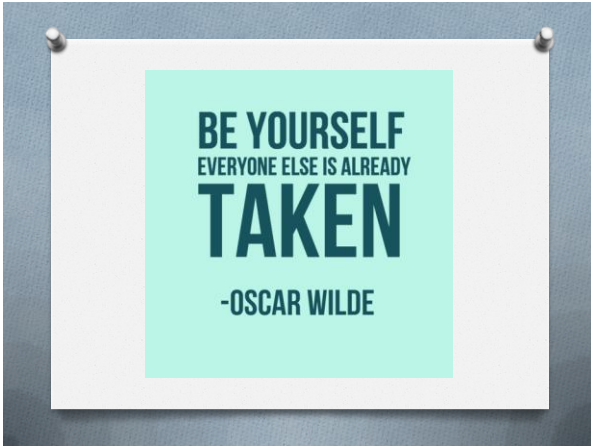
**Now comes the question
again ???**

Why in _____
heaven's _____
name am I _____
doing what _____
I am doing? _____

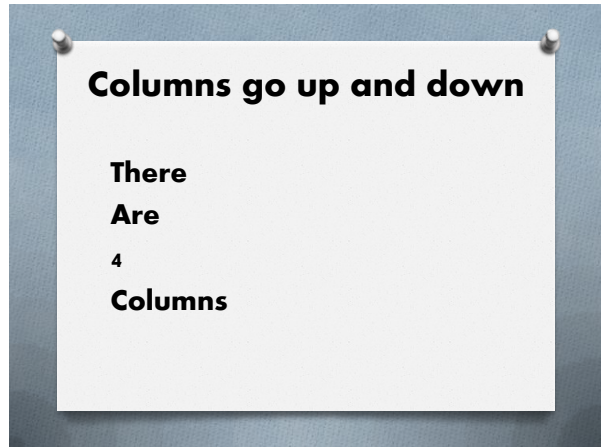
**To figure out your 'Why' it
helps to know**

You

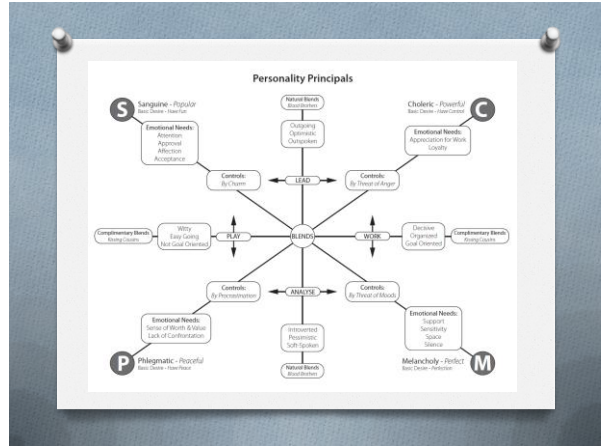




Strengths			
1	Adventurousness	Adaptability	Adaptability
2	Assertiveness	Assertiveness	Assertiveness
3	Consideration	Consideration	Consideration
4	Self-reliance	Self-reliance	Self-reliance
5	Self-reliance	Self-reliance	Self-reliance
6	Self-reliance	Self-reliance	Self-reliance
7	Self-reliance	Self-reliance	Self-reliance
8	Self-reliance	Self-reliance	Self-reliance
9	Self-reliance	Self-reliance	Self-reliance
10	Self-reliance	Self-reliance	Self-reliance
11	Self-reliance	Self-reliance	Self-reliance
12	Self-reliance	Self-reliance	Self-reliance
13	Self-reliance	Self-reliance	Self-reliance
14	Self-reliance	Self-reliance	Self-reliance
15	Self-reliance	Self-reliance	Self-reliance
16	Self-reliance	Self-reliance	Self-reliance
17	Self-reliance	Self-reliance	Self-reliance
18	Self-reliance	Self-reliance	Self-reliance
19	Self-reliance	Self-reliance	Self-reliance
20	Self-reliance	Self-reliance	Self-reliance
21	Self-reliance	Self-reliance	Self-reliance
22	Self-reliance	Self-reliance	Self-reliance
23	Self-reliance	Self-reliance	Self-reliance
24	Self-reliance	Self-reliance	Self-reliance
25	Self-reliance	Self-reliance	Self-reliance
26	Self-reliance	Self-reliance	Self-reliance
27	Self-reliance	Self-reliance	Self-reliance
28	Self-reliance	Self-reliance	Self-reliance
29	Self-reliance	Self-reliance	Self-reliance
30	Self-reliance	Self-reliance	Self-reliance
31	Self-reliance	Self-reliance	Self-reliance
32	Self-reliance	Self-reliance	Self-reliance
33	Self-reliance	Self-reliance	Self-reliance
34	Self-reliance	Self-reliance	Self-reliance
35	Self-reliance	Self-reliance	Self-reliance
36	Self-reliance	Self-reliance	Self-reliance
37	Self-reliance	Self-reliance	Self-reliance
38	Self-reliance	Self-reliance	Self-reliance
39	Self-reliance	Self-reliance	Self-reliance
40	Self-reliance	Self-reliance	Self-reliance



Weaknesses			
Sanguine - Popular	Choleric - Powerful	Melancholy - Perfect	Phlegmatic - Peaceful
<p>E Impugnance and ill-will</p> <p>M Drives no one</p> <p>C Can't remember names</p> <p>T Is aware others are off</p> <p>I Has restless energy</p> <p>O Impugnance</p> <p>N Bluntness and condescension</p> <p>S Has loud voice and laugh</p> <p>Controlled by circumstances</p> <p>Gets angry easily</p> <p>Doesn't give to ease</p> <p>Never gives up</p>	<p>B Drives</p> <p>S Quick temper</p> <p>C Can't forgive</p> <p>F Too impatient</p> <p>I Impugnance over and arguments</p> <p>W Won't give up when losing</p> <p>C Cannot see the wrong</p> <p>I Indulgent</p> <p>D Bluntness and condescension</p> <p>S Has loud voice and laugh</p> <p>Controlled by circumstances</p> <p>Gets angry easily</p> <p>Doesn't give to ease</p> <p>Never gives up</p>	<p>B Remembers the negative</p> <p>S Moody and depressed</p> <p>R Enjoys being hurt</p> <p>M Has idea of duty</p> <p>O Quiet will of ideas</p> <p>H Has self-will</p> <p>R Has extreme bearing</p> <p>I Self-willed</p> <p>F Too introverted</p> <p>C Cautious</p> <p>P Persecution complex</p> <p>F Feels his responsibility</p>	<p>D Indifferent</p> <p>H Has kind and even tone</p> <p>I Indolence</p> <p>S Lacks responsibility</p> <p>Q Quiet will of ideas</p> <p>H Has self-will</p> <p>R Has extreme bearing</p> <p>I Self-willed</p> <p>F Too introverted</p> <p>C Cautious</p> <p>P Persecution complex</p> <p>F Feels his responsibility</p>
<p>W Will not allow talk</p> <p>S Impugnance</p> <p>F Does not follow through</p> <p>O Considerable self-love</p> <p>R Indulgent</p> <p>K Has no order</p> <p>D Demanding of others</p> <p>S Easily satisfied</p> <p>W Wastes time talking</p>	<p>L Little tolerance for mistakes</p> <p>S Does not forgive readily</p> <p>B Bored by work</p> <p>M May make rash decisions</p> <p>P May be rude or selfish</p> <p>M Manipulative people</p> <p>D Demanding of others</p> <p>S Easily satisfied</p> <p>W Works long because his god</p> <p>S Demands loyalty in the world</p>	<p>N Not goal oriented</p> <p>D Depressed over negative factors</p> <p>C Chooses difficult work</p> <p>S Becomes too strict projects</p> <p>P Plans too much time planning</p> <p>S Self-deprecating</p> <p>H Hard to please</p> <p>R Rude and often too high</p> <p>S Too much for attention</p>	<p>N Not goal oriented</p> <p>L Lacks self-motivation</p> <p>H Hard to get moving</p> <p>S Becomes too practical</p> <p>L Lazy and careless</p> <p>S Shows up others</p> <p>W Would rather work</p>
<p>F Needs to be alone</p> <p>R Needs to be popular</p> <p>E Needs for credit</p> <p>C Dislikes conversation</p> <p>N Interrogates and doesn't listen</p> <p>D Demands of others</p> <p>S Prides and arrogant</p> <p>M Makes excuses</p> <p>R Repeats stories</p>	<p>F Finds to use people</p> <p>D Dislikes self</p> <p>S Dislikes for others</p> <p>K Knows everything</p> <p>C Can do everything better</p> <p>I Is too judgmental</p> <p>P Persecution of friends and state</p> <p>C Can't say "I'm sorry"</p> <p>M May be right, but unpopular</p>	<p>L Loves through actions</p> <p>S Becomes socially</p> <p>H Holds one and revenge</p> <p>D Dislikes of others</p> <p>S Dislikes to be in opposition</p> <p>P Suspicion of people</p> <p>A Arrangement and vengeful</p> <p>P Full of more actions</p> <p>H Hatred of conversation</p>	<p>S Suspense emotions</p> <p>R Rejoice unbridled</p> <p>I Is not smiling</p> <p>H Indifferent to please</p> <p>S Judges others</p> <p>L Lacks care and treating</p> <p>C Careless change</p>



Personality Plus Profile –
Florence Littauer
www.quibblo.com/quiz/2FF0QY4/
Personality-plus-test

What personality category do you fall?

- a. Unicorn-Sanguine _____
- b. Lion- Choleric _____
- c. Owl – Melancholy _____
- d. Golden Retriever - Phlegmatic _____

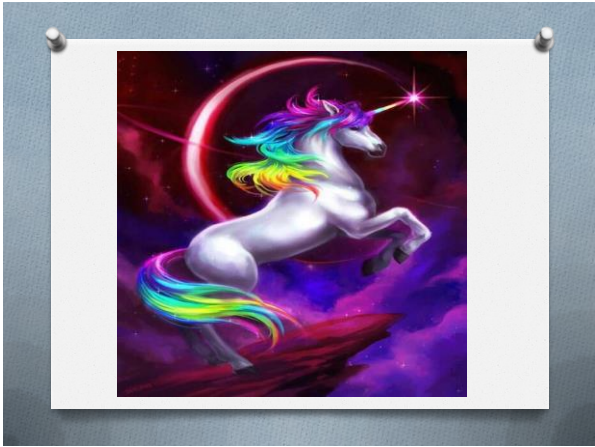
Why do you think it is important to know different personality traits?

Does personality traits affect how a leader approaches another staff member?

Unicorn - Sanguine

Strength Traits:

- o Spirited
- o Sociable
- o Cheerful
- o Inspiring
- o Talker



Lion - Choleric

Strength Traits _____

- o **Adventurous** _____
- o **Competitive** _____
- o **Resourceful** _____
- o **Positive** _____
- o **Confident** _____



Owl - Melancholy

Strength Traits _____

- o **Analytical** _____
- o **Detailed** _____
- o **Scheduled** _____
- o **Loyal** _____
- o **Perfectionist** _____



Golden Retriever- Phlegmatic

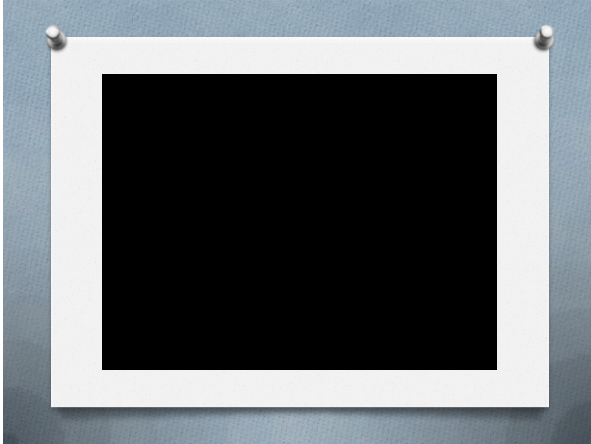
Strength Traits _____

- o **Adaptable** _____
- o **Peaceful** _____
- o **Friendly** _____
- o **Diplomatic** _____
- o **Listener** _____



- o **What would you say is your greatest trait?** _____
- o **What would you say is your greatest strength?** _____
- o **What would you say is a needed strength to be a leader?** _____
- o **Given your present position what strength do you need in someone else?** _____

What do you hope will be the **Fruits of your life-time of labor?**



'5' Stages of Leadership

Starting point – Stage one Title

- o This is where the biggest staff turnover occurs _____
- o The staff will only follow you because of your title _____
- o Negatively reigns _____
- o Staff doubt your every move _____
- o Testing abides _____

Stage two – You have withstood the testing

- o Relationships begin to form _____
- o The staff see you standing firm _____
- o Staff see you making decisions _____
- o You are painting a vision they can understand and see _____

Stage three – Making things happen

- o Changes are happening _____
- o Things are beginning to make sense _____
- o Systems being put in place _____
- o Staff are liking what they are experiencing _____
- o Staff are not excited for more to happen _____

Stage four - Growth

- o Staff see opportunities for themselves to grow _____
- o Systems are working _____
- o Processes have improved _____
- o Outcomes are positive _____
- o Staff develop into leaders and move on _____
- o This is the stage most leaders stop.. So be careful _____

Stage five - Integrity

- o Staff follow you because they trust you and know you _____
- o Staff stand behind you because they know you have integrity _____
- o Staff will follow you anywhere without question. _____
- o This is the stage where you now become the mentor _____

Leadership Traits


- #1 _____
- You know who you are... you are the 'You' you were created to be...** _____
- _____
- _____
- _____
- _____
- _____

#2

You believe in yourself and your abilities. You have studied the situation, product and tested your theories and you believe without a doubt your goal is accomplishable

Henry Ford went broke five times before he succeeded


THE MAN WHO WILL USE HIS SKILL AND CONSTRUCTIVE IMAGINATION TO SEE HOW MUCH HE CAN GIVE FOR A DOLLAR, INSTEAD OF HOW LITTLE HE CAN GIVE FOR A DOLLAR, IS BOUND TO SUCCEED. *-HENRY FORD*



#3

You are not arrogant or smug. You inspire and encourage all to move forward. Your dreams can seem large to others.

Robert Kennedy stated, 'Only those who dare to fail greatly can achieve greatly'



"Progress is a nice word. But change is its motivator. And change has its enemies."

Robert Kennedy

#4

You are a good communicator.

You are able to describe in great detail (including in color) a picture of the end product (goal)

#5

You are trustworthy and ethical...

you follow through with what you say...

you stand by your word...

If you tell the truth
it becomes a part **of your past.**

But if you lie
it becomes a part **of your future.**

#6

You believe in the team and you delegate...

you let go and welcome the opportunity to trust your team

#7

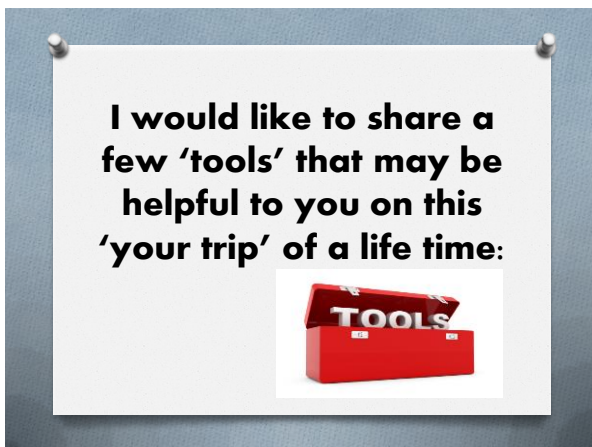
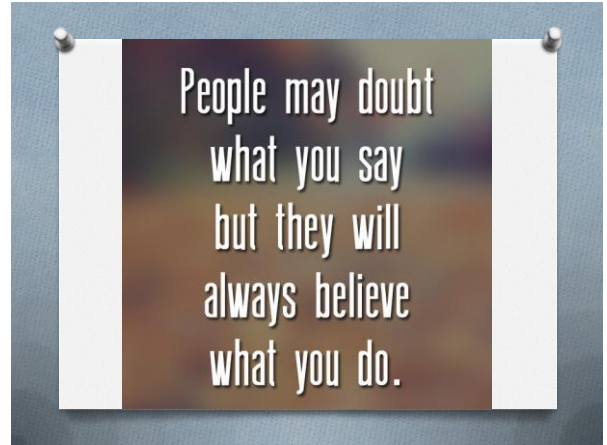
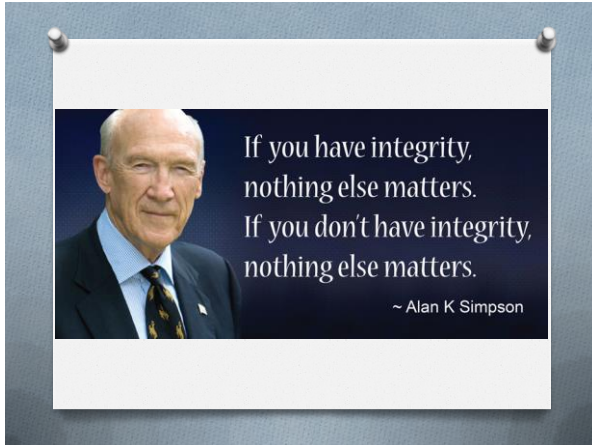
You are decisive... you are not 'wishy-washy'. You possess a 'sixth-sense' to know when it is time to take action



#8

You know how to give credit where credit is deserved and you know to say...thank you... often





Number #2 WD-40

Keep handy to
stop and reduce
the squeakers!

**Number #3 Wrench**

It is able to open
up to handle
small issues..
but also open large
enough to handle
major issues..
It is **Adjustable**

**Number #4 Butterfly Net**

Dare to run after your
dreams,
catch them
and then
dream again

**Number #5**

Shoes in many styles

Walk a mile in their shoes
Before you judge them..



Number #6 A jar of honey!

Make your
words sweet
just in case
you have to eat
them later

**Number # 7 A slice of humble pie**

To help you never
forget it takes
a team to
succeed and
'pride cometh
before a fall'.

**Number 8 Liquid eye drops**

To keep your vision clear
Keep your vision
so real you can
taste it, smell it
and touch it.



9

Stack of thank you cards

You can never
say thank
you enough
times...



**The next tool is
the most
important one..
Please do not
lose it!**

Number 10

Your Moral Compass



**The depth of your roots will
depend on the strength of your
inner self and the soil in which you
place yourself**



**Before you go, I
want to introduce to
you someone
special**

Meet Flo



Flo's Bill



Flo & Bill



Flo & Bill - 50 years



Flo



Flo

**It was
a hard
time for
Flo and
Bill**



Flo



The next slide is 'Flo**'
6 weeks after admission**

Flo



**Questions?
Comments?
Feelings?**

Do you believe it is possible for - 'one person' - to make a difference in another person's life?

YES!

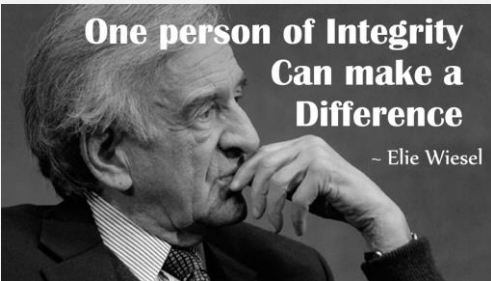
'One' Person



**In healthcare,
Leaders (whether
by title or gift) not
only make or break
organizations, they
'affect' lives...!**

**One person of Integrity
Can make a
Difference**

~ Elie Wiesel



**This is why I do
what I do... How
about you?**

